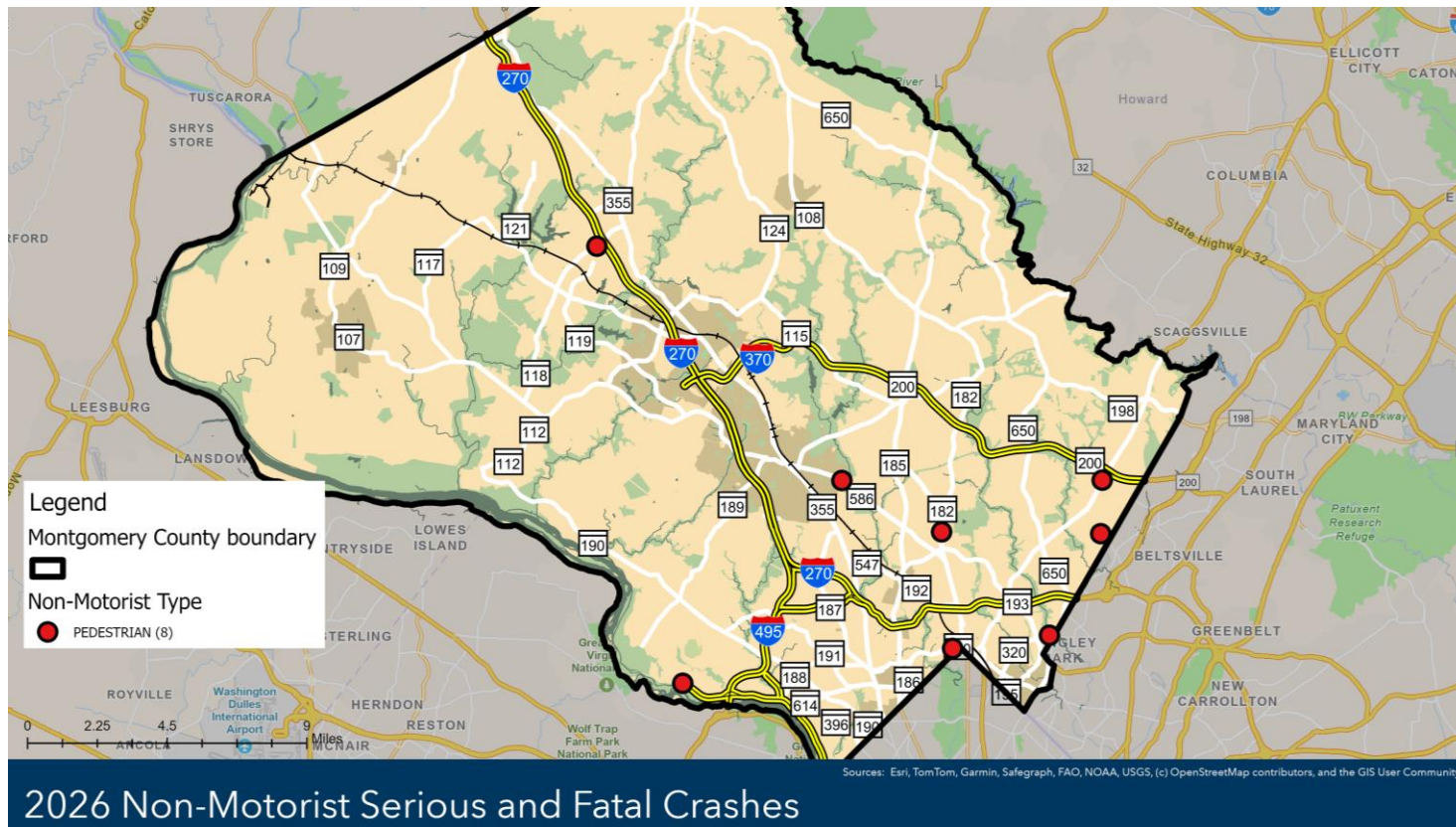


March 2026 Crash Data Update



Report summary

- This monthly report provides a snapshot of non-motorist (pedestrian, cyclist, and scooter) involved crashes in 2025 compared to prior years and the first two months of 2026.
- 61 pedestrian involved crashes in January and February 2026, 6 with suspected serious injuries and 2 fatalities. Three fewer crashes compared to last year and 32% below the pre-COVID average. Suppressed travel volume during the “snowcrete” storm and cleanup during this period may have lowered crash totals.
- 11 cyclist involved crashes in January 2026, 0 with serious injuries or fatalities. 2026 two month total matching last year and one crash above the pre-COVID average.
- 4 scooter involved crashes in January and February 2026 with minor injuries. Three more than last year and matching 2024.

Published March 20, 2026.

Note on Preliminary 2025 Data

Closeout and audit process on-going through spring 2026.

The 2025 data will fluctuate over the coming months as crash reports are finalized and validated, with potential increases and decreases.

All data are subject to change.

Key Terms

- **Pedestrian involved crash** – Police reported at least one unit involved in a crash was listed as a pedestrian, wheelchair user, or other non-motorist type.
- **Cyclist involved crash** – Police reported at least one unit involved in a crash was listed as a cyclist (electric or non-electric).
- **Scooter involved crash** – Police reported at least one unit involved in a crash was listed as a scooter user (electric or non-electric). The scooter user category is new in 2024. Prior to this year, scooter-involved crashes were spread across pedestrian and cyclist categories.
- **Highest Injury Level** – The most severe injury reported for a crash.
- **Pre-COVID Avg.** – The 4-year average number of crashes for the years 2016 to 2019.

Exclusion of Interstates and ICC (MD 200)

Roadway Exclusions

The County Government receives crash data from the Maryland State Police (MSP) for the following local police agencies operating in Montgomery County:

- Montgomery County Police (MCPD)
- Rockville City Police Department (RCPD)
- Gaithersburg Police Department (GPD)
- Maryland-National Capital Park Police, Montgomery County (M-NCPPC Police)
- Takoma Park Police (TPPD)

The County Government does not receive data from the following state and federal agencies:

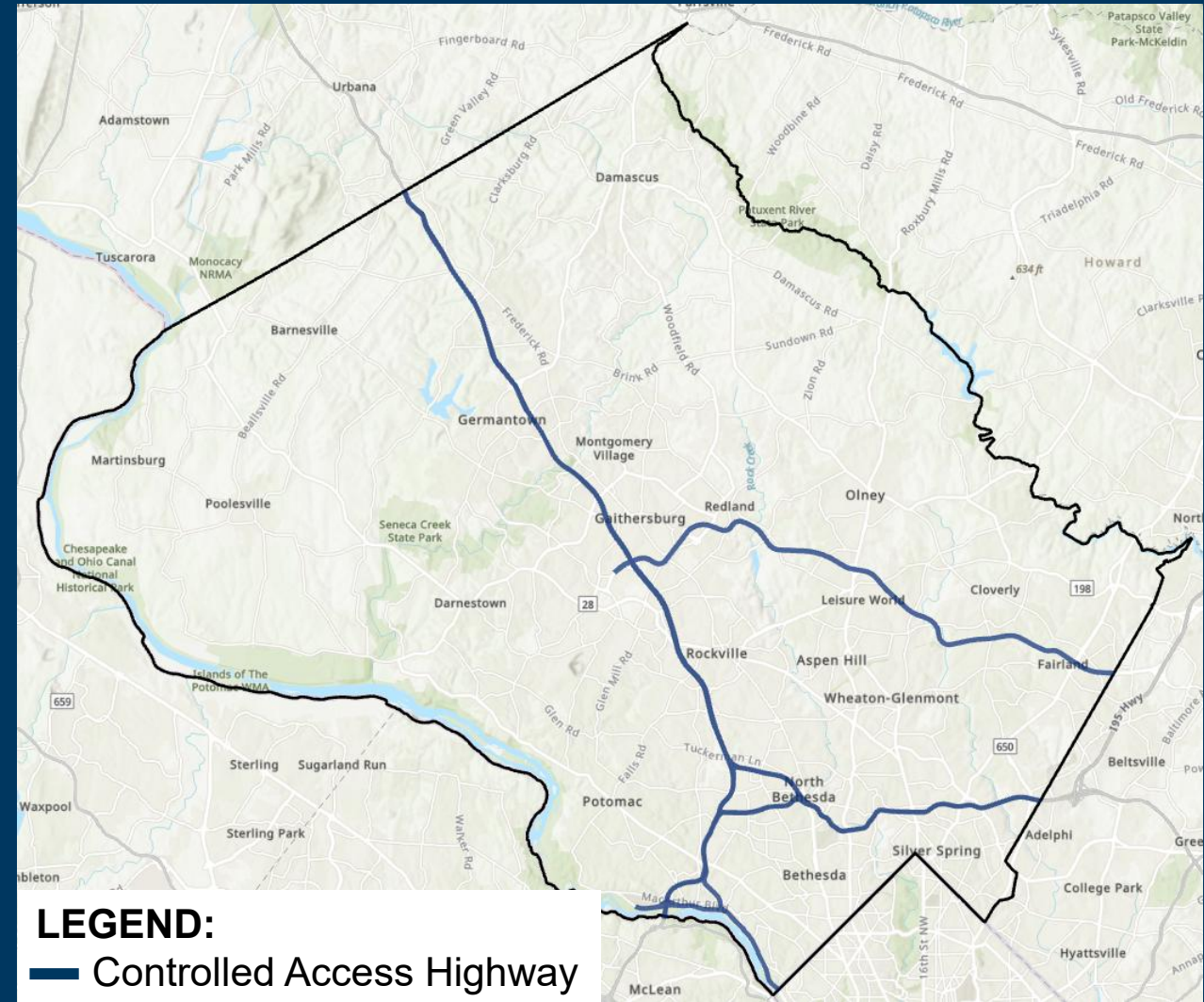
- Maryland State Police (MSP)
- Maryland Transit Authority Police (MTAPD)
- National Park Service Police (NPS PD)

Therefore, the following roadways are excluded from County Government reporting.

- Interstates (I-270, I-370, I-495)
- Intercounty Connector (MD-200)
- National Park Service roads (Clara Barton Parkway and minor access roads)

For final reports covering all roadways, see reporting from the Maryland Department of Transportation – Highway Safety Office at:

<https://zerodeathsmd.gov/resources/crashdata/>



January and February Crash Totals

Crashes between January 1 – February 28



2026 Pedestrian Involved Crashes

61 pedestrian involved crashes in January and February 2026, 6 with suspected serious injuries and 2 fatalities. Three fewer crashes compared to last year and 32% below the pre-COVID average. Suppressed travel volume during the “snowcrete” storm and cleanup during this period may have lowered crash totals.

| Highest Injury Level | 2026 Jan. | 2025 Jan. | 2022-2025 Avg. | 2016-2019 Avg. | % Change from 2025 | % Change from 4-yr. Avg. | % Change from pre-COVID Avg. |
|----------------------|-----------|-----------|----------------|----------------|--------------------|--------------------------|------------------------------|
| No Injury | 4 | 4 | 5 | 3 | 0% | -20% | +33% |
| Minor Injury | 49 | 48 | 60 | 74 | +2% | -18% | -34% |
| Serious Injury | 6 | 12 | 10 | 11 | -50% | -40% | -45% |
| Fatal | 2 | 0 | 1 | 2 | NA | +100% | 0% |
| Total Crashes | 61 | 64 | 76 | 90 | -5% | -20% | -32% |

NOTES:

- 2025 and 2026 data are preliminary and subject to change. Data as of 03/20/26.
- Includes reports from MCPD, RCPD, GCPD, M-NCPPC Police, and TPPD.

2026 Cyclist Involved Crashes

11 cyclist involved crashes in January 2026, 0 with serious injuries or fatalities. 2026 two month total matching last year and one crash above the pre-COVID average.

| Highest Injury Level | 2026 Jan. | 2025 Jan. | 2022-2025 Avg. | 2016-2019 Avg. | % Change from 2025 | % Change from 4-yr. Avg. | % Change from pre-COVID Avg. |
|----------------------|-----------|-----------|----------------|----------------|--------------------|--------------------------|------------------------------|
| No Injury | 2 | 2 | 2 | 1 | 0% | 0% | +100% |
| Minor Injury | 9 | 9 | 6 | 8 | 0% | +50% | +13% |
| Serious Injury | 0 | 0 | 1 | 1 | NA | -100% | -100% |
| Fatal | 0 | 0 | 0 | 0 | NA | NA | NA |
| Total Crashes | 11 | 11 | 9 | 10 | 0% | +22% | +10% |

NOTES:

- 2025 and 2026 data are preliminary and subject to change. Data as of 03/20/26.
- Includes reports from MCPD, RCPD, GCPD, M-NCPPC Police, and TPPD.

2026 Scooter Involved Crashes

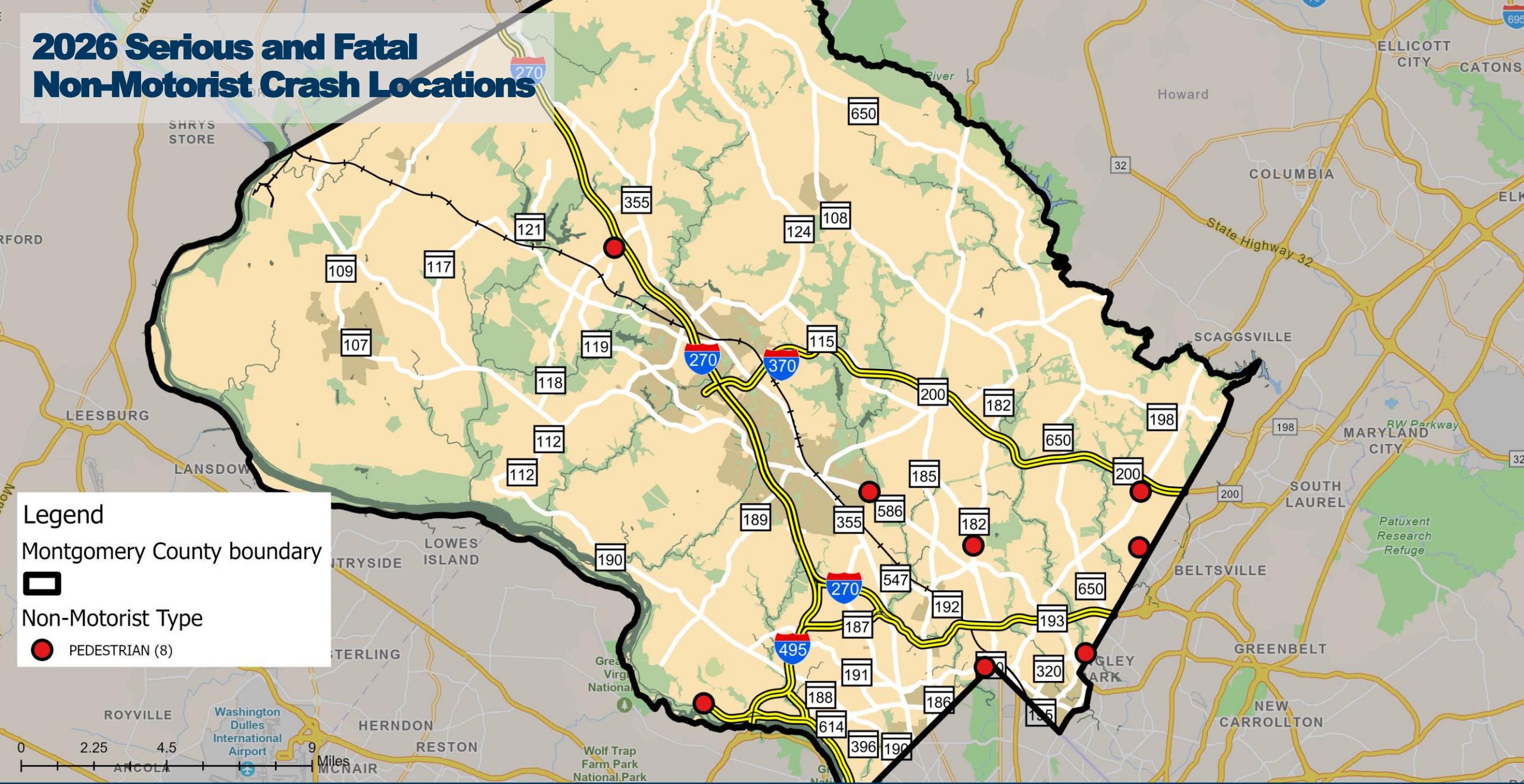
4 scooter involved crashes in January and February 2026 with minor injuries. Three more than last year and matching 2024.

| Highest Injury Level | 2026 Jan. | 2025 Jan. | 2024 Jan. | % Change from 2025 |
|----------------------|-----------|-----------|-----------|--------------------|
| No Injury | 0 | 0 | 1 | NA |
| Minor Injury | 4 | 1 | 2 | +300% |
| Serious Injury | 0 | 0 | 1 | NA |
| Fatal | 0 | 0 | 0 | NA |
| Total Crashes | 4 | 1 | 4 | +300% |

NOTES:

- 2025 and 2026 data are preliminary and subject to change. Data as of 03/20/26.
- Includes reports from MCPD, RCPD, GCPD, M-NCPPC Police, and TPPD.
- As of 1/1/2024, electric and non-electric scooters are a new non-motorist type and now shown as a separate category.

2026 Serious and Fatal Non-Motorist Crash Locations



Sources: Esri, TomTom, Garmin, Safegraph, FAO, NOAA, USGS, (c) OpenStreetMap contributors, and the GIS User Community

Annual Crash Totals

Crashes between January 1 – December 31



Pedestrian Involved Crashes

460 pedestrian involved crashes in 2025, 66 with suspected serious injuries and 14 fatalities. Overall pedestrian involved crashes were down 8% from last year and 5% from the pre-COVID years. There were 11 more serious and fatal crashes compared to the pre-COVID average.

| Highest Injury Level | 2025 | 2024 | 2021-2024 Avg. | 2016-2019 Avg. | % Change from 2024 | % Change from 4-yr. Avg. | % Change from pre-COVID Avg. |
|----------------------|------------|------------|----------------|----------------|--------------------|--------------------------|------------------------------|
| No Injury | 26 | 36 | 28 | 21 | -28% | -7% | +24% |
| Minor Injury | 354 | 389 | 350 | 395 | -9% | +1% | -10% |
| Serious Injury | 66 | 59 | 57 | 58 | +12% | +16% | +14% |
| Fatal | 14 | 16 | 12 | 11 | -13% | +17% | +27% |
| Total Crashes | 460 | 500 | 447 | 485 | -8% | +3% | -5% |

NOTES:

- 2025 data are preliminary and subject to change. Data as of 03/20/26.
- Includes reports from MCPD, RCPD, GCPD, M-NCPPC Police, and TPPD.

Cyclist Involved Crashes

151 cyclist involved crashes in 2025, 6 with serious injuries and 4 fatalities. Total cyclist involved crashes in 2025 exceed prior years due to higher than average crashes in September and November.

| Highest Injury Level | 2025 | 2024 | 2021-2024 Avg. | 2016-2019 Avg. | % Change from 2024 | % Change from 4-yr. Avg. | % Change from pre-COVID Avg. |
|----------------------|------------|------------|----------------|----------------|--------------------|--------------------------|------------------------------|
| No Injury | 27 | 25 | 21 | 15 | +8% | +29% | +80% |
| Minor Injury | 114 | 99 | 90 | 103 | +15% | +27% | +11% |
| Serious Injury | 6 | 12 | 12 | 14 | -50% | -50% | -57% |
| Fatal | 4 | 0 | 1 | 2 | NA | +300% | +100% |
| Total Crashes | 151 | 136 | 124 | 134 | +11% | +22% | +13% |

NOTES:

- 2025 data are preliminary and subject to change. Data as of 03/20/26.
- Includes reports from MCPD, RCPD, GCPD, M-NCPPC Police, and TPPD.

Scooter Involved Crashes

43 scooter involved crashes in 2025, 5 with suspected serious injuries. Three more scooter involved crashes compared to last year.

| Highest Injury Level | 2025 | 2024 | % Change from 2024 |
|----------------------|-----------|-----------|--------------------|
| No Injury | 4 | 4 | 0% |
| Minor Injury | 34 | 34 | 0% |
| Serious Injury | 5 | 2 | +150% |
| Fatal | 0 | 0 | NA |
| Total Crashes | 43 | 40 | +8% |

NOTES:

- 2025 data are preliminary and subject to change. Data as of 03/20/26.
- Includes reports from MCPD, RCPD, GCPD, M-NCPPC Police, and TPPD.
- As of 1/1/2024, electric and non-electric scooters are a new non-motorist type and now shown as a separate category.

2025 Serious and Fatal Non-Motorist Crash Locations

